

1-POLLINATORS FACTS

1- LANDSCAPE HURRICANE PREPAREDNESS

2-SEPTIC TO SEWER

2- GREEN TRANSPORTATION

3- EAT LESS MEAT, REDUCE HEAT

3- UPCOMING GREEN HOLIDAYS



Resilient NoMi

Plan . Protect . Preserve

Pollinators Facts



As August hosts National Honey Bee Day, it is important to understand the importance of pollinators such as bees. Here are some quick facts to get you started:

- While collecting pollen and nectar for food, bees carry pollen from one flower to another.
- Pollinators aid in the reproduction cycle of native plant communities
- Pollinators, include **native bees, wasps, moths, flies, beetles, hummingbirds and even bats.**
- Major **Florida crops** that benefit from bee pollination include cucumber, watermelon, citrus, squash, strawberries, avocados, blueberries and eggplant.
- **Native wildflowers** attract pollinators. Plant a butterfly garden to include blue, purple, violet, white and yellow natives which are preferred flower colors by pollinators.



Landscape Hurricane Preparedness

Hurricane season runs from June 1st until November 30th and August is the peak of Hurricane season. The right tree in the right place may help protect your property by acting as a buffer. Here are some tips to help you get started:

- **Right Tree, Right Place** – Plant larger trees away from your home, power lines, and other structures.
- **Plant in Groups or Masses** – Planting groups of mixed trees together can greatly enhance wind resistance as trees buffer each other as well as your property.
- **Choose native** wind-resistant trees such as: gumbo limbo, sand live oak, sabal palm, and sea grape which have high hurricane survival rates.
- **Prune and maintain** your landscape – Remove limbs that are damaged or weakly connected to the trunk. Remove mainly the interior branches to allow the winds to pass through more easily.
- **Use a certified arborist** lawn care worker or tree trimmer Don't be afraid to ask to see their registration or license and insurance to avoid unnecessary fines.
- After a hurricane, **young downed trees may be re-set.** Follow the tips provided by the county. Have a safe rest of the hurricane season!
[Tree Preparation for Hurricanes](#)



Septic to Sewer

Miami Dade county's Connect 2 Protect aims to extend sanitary sewer services to residents with septic systems. The sewer system is regionally preferable to protect South Florida's high water table.

Septic tanks release wastewater into a drainfield. Excess nutrients from discharge may lead to **toxic algae blooms** that jeopardize flora & fauna, including the **endangered Florida Manatee**.

Rising groundwater from sea-level rise will only increase the risk to human health and the quality of ground and surface waters including Biscayne Bay.

Click on the link below to verify the system used by your home:
Connect (miamidade.gov)



Green Transportation

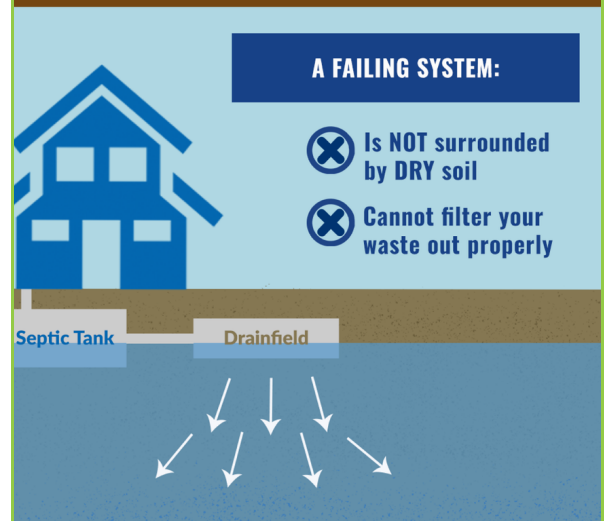
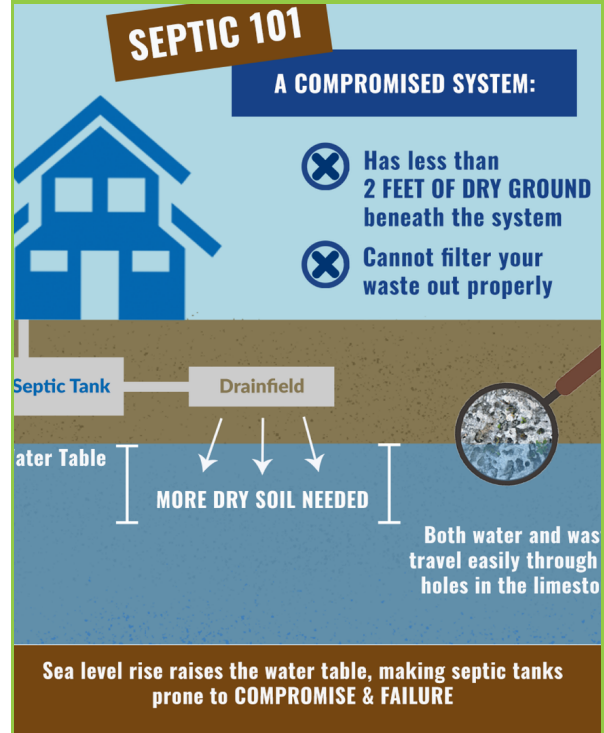
The Transportation sector accounts for **27% of the world's greenhouse gas emissions** according to the EPA. Green Transportation refers to any kind of transportation practice or vehicle that is more eco-friendly than conventional combustion fueled vehicles.

Green Transportation alternatives include:
Bicycling, walking, carpooling, electric vehicles, buses and trains.

The NoMi Express bus service is free and includes bike racks available and is wheelchair accessible.

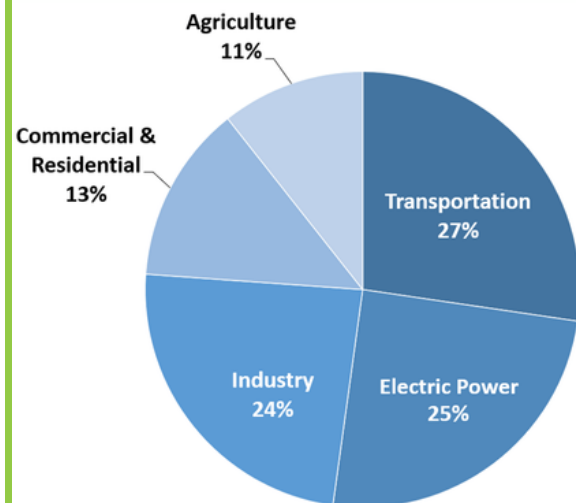
Click on the link below to learn more about the Nomi Express:

<https://www.northmiamifl.gov/285/NoMi-Express-Free-Bus>



Miami-Dade Plan of Action for Septic Systems - Miami Waterkeeper

Total U.S. Greenhouse Gas Emissions by Economic Sector in 2020



U.S. Environmental Protection Agency (2022). Inventory of U.S. Greenhouse Gas Emissions and Sinks: 1990-2020

Eat less meat, Reduce heat!

Animal agriculture is the leading cause of environmental degradation due to habitat loss and greenhouse gas emissions: methane and nitric oxide.

Livestock uses precious agricultural land, contributing to deforestation, biodiversity loss and water pollution. Here's what you can do to reduce your meat consumption and keep our planet cool:

- Practice **Meatless Monday**
- Try non-dairy milk, spreads, cheeses, and more
- Consider the ***flexitarian diet***: it's high in plant-based food with a limited amount of meat.

Support vegan-friendly North Miami businesses including local juice bars and restaurants!

Upcoming Green Holidays

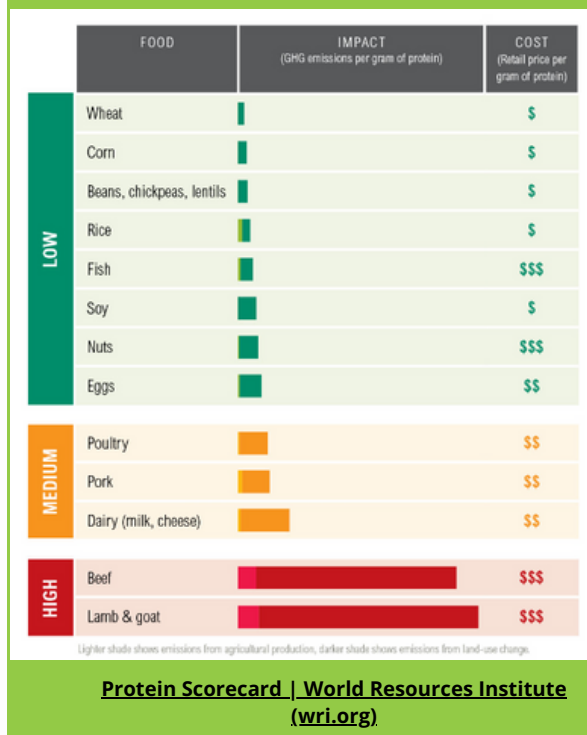
- August 22: National Honey Bee Day
- September 15th: World Clean up Day
- September 16: Day for the Preservation of the Ozone Layer
- September 18: World Water Monitoring Day
- September 21: Zero Emissions Day
- September 22: Car Free Day
- September 26: World Environmental Health Day
- September 29: World Rivers Day
- October 1: World Vegetarian Day
- October 4: World Animal Day
- October 5: Energy Efficiency Day
- October 7: World Habitat Day
- November 1: World Vegan Day
- November 15: America Recycles Day*
- November 17: Take a Hike Day
- December 5: World Soil Day

For more information

PLEASE CONTACT:

CHRISTINA VIALA, LEED GREEN ASSOCIATE SUSTAINABILITY ADMINISTRATOR

DEPARTMENT: COMMUNITY PLANNING & DEVELOPMENT
 PHONE: (305)893-6511 EXT:19008
 EMAIL: PVIALA@NORTHMIAMIFL.GOV
 WEBSITE: NORTHMIAMIFL.GOV/202/SUSTAINABILITY



Park Spotlight: Oleta

Did you know that 19% of North Miami's land area is Oleta River State Park? The park is the largest tourism generator for the City of North Miami.

The park was established in 1986 and is the largest urban state park in Florida. It was once a settlement for Tequesta Native Americans. Oleta is perfect for **hiking, biking, kayaking, fishing** and more!

"Let the future say of our generation that we sent forth mighty currents of hope and that we worked together to heal the world.." – Jeffrey Sachs.

